

2021 KEY ACHIEVEMENTS



PRODUCT LAUNCHES

PRODUCT INNOVATION 1 GREAT GREEN SP

A company **FIRST** Short-term endowment policy



Clients get to invest in environmental themes

PRODUCT INNOVATION 2 SNTC TRUST

Discounted premiums offering a simple term life insurance payable upon death or terminal illness to the caregivers with special needs dependents



Only available to SNTC customers who put this policy under SNTC irrevocable trusts



Sum assured offered
\$S\$100,000 TO \$S\$300,000
per life

ENVIRONMENT



Reduced 20% in operational emissions (per FTE) from year 2019 to 2021



Target to **reduce the carbon footprint** of our listed equity portfolio by 20% by 2025



Target to achieve **Net Zero** for our operational footprint by 2025

SOCIAL

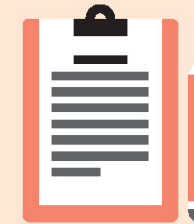


Providing more than **\$S\$8 million¹** to protect residents in Singapore and Malaysia from possible effects of COVID-19 vaccine.

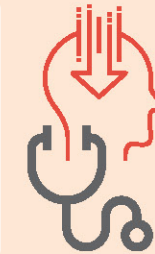


First in market to offer free post-vaccination protection to all Singapore residents²

Offering flexibility to customers in accessing their policy and claim information either through our online platform around the clock, or in the traditional manner, close to one-third of clients having chosen the online platform



Provided cover for **over 5 million** beneficiaries in B40³ in Malaysia through our Financial inclusion schemes and products⁴



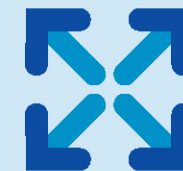
First in Singapore to offer tele-mental wellness consultation, manned by specially-trained doctors and professionals

- 1 Plans include: (SG) GREAT COVID Care Plan, (SG & MY) GREAT Vaccine Fund, (MY) COVID-19 Medical Plan Coverage Programme, (MY) COVID-19 Private Hospitalisation Assistance and Vaccine Fund for Group Employee Benefits schemes.
- 2 GREAT COVID Care Plan.
- 3 According to the household income classification in Malaysia, B40 represents the Bottom 40%.
- 4 Include MySalam, MikroSayang, EasyCare Plus.

GOVERNANCE



Implemented sustainable supplier engagement in the way we engage our vendors



Continue to broaden and deepen our ESG integration across all asset classes in the investment portfolio