

# HERE'S TO THE ONES WHO MAKE US THE LIFE COMPANY

The ones who lean in, listen and put themselves in others' shoes.

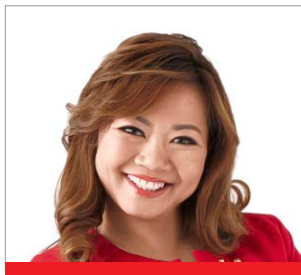
Who are on-call night and day, rain or shine. Who never switch off because life doesn't either.

To our Agents of Life, thank you for always going that extra mile to #lifeproof our customers.

## TOP DIRECTORS



Top Director  
**RIX CHAN**



1st Runner Up  
**SHENILE TEO MUI KEOW LUCY**  
FChFP, IBF Standards



2nd Runner Up  
**GOH CHAN JOO**

## TOP MASTER BUILDER DIRECTORS



Top Director  
**RIX CHAN**



1st Runner Up  
**SHENILE TEO MUI KEOW LUCY**  
FChFP, IBF Standards



2nd Runner Up  
**JULIAN LEE**

## TOP NEW DIRECTORS



Top Director  
**YVONNE QUAH**



1st Runner Up  
**DEXTER YEO ENG HONG**  
ChFC®/S, ASEP®, CLU®/S



2nd Runner Up  
**DAISY YAO**  
CFP®, ASEP®, IBFA

## TOP RECRUITING DIRECTORS



Top Director  
**RIX CHAN**



1st Runner Up  
**PATRICK LOH**  
AEP®, ASEP®, CFP®, CLU®/S



2nd Runner Up  
**GORDON TAN JIT CHEE**

## TOP MANAGERS



Top Manager  
**REMUS LIN WEIJIE**



1st Runner Up  
**MICHAEL TAN JOON HWA**



2nd Runner Up  
**TIMOTHY TAN**  
ChFC®/S

## TOP MASTER BUILDER MANAGERS



Top Manager  
**TIMOTHY TAN**  
ChFC®/S



1st Runner Up  
**MICHAEL TAN JOON HWA**



2nd Runner Up  
**JASON THIAN CHUAN HAO**  
ChFC®/S

## TOP NEW MANAGERS



Top Manager  
**YUE SOOK MEI**



1st Runner Up  
**CHEN WEI SKY**



2nd Runner Up  
**ZAC CHUA ZHEN YAO**  
AFC

## TOP RECRUITING MANAGERS



Top Manager  
**MICHAEL TAN JOON HWA**



1st Runner Up  
**CHUA LENIN**



2nd Runner Up  
**JEFF LEW**



2nd Runner Up  
**YIP SZE WAN**

## TOP EXECUTIVE SENIOR PRODUCERS



Top Producer  
**SHERIN LEW CHIEW QUAN**  
ASEP®



1st Runner Up  
**ACE CHAN ZHE HUI**  
ChFC®/S



2nd Runner Up  
**ANNA CHUA**

## TOP SENIOR PRODUCERS



Top Producer  
**JESSICA YEO MIN XIU**



1st Runner Up  
**CHONG KUAN SIONG**



2nd Runner Up  
**TAN JUN HOU**

## TOP NEW PRODUCERS



Top Producer  
**MOHAMMAD FAIRDAUS BIN ABDULLAH**



1st Runner Up  
**A R MOHAMED HABIB BIN ABDUL WAHAB**



2nd Runner Up  
**SOH ROU JIE DEBORAH**

# HERE'S TO THE ONES WHO MAKE US THE LIFE COMPANY

The ones who lean in, listen and put themselves in others' shoes.

Who are on-call night and day, rain or shine. Who never switch off because life doesn't either.

To our Agents of Life, thank you for always going that extra mile to #lifeproof our customers.

## EXECUTIVE SENIOR DIRECTORS



## SENIOR DIRECTORS



## EXECUTIVE ENTRE-PLANNERS



## MDRT - TOP OF THE TABLE



## MDRT - COURT OF THE TABLE



## MDRT - QUARTER CENTURY CLUB



## ENTRE-PLANNERS

